



CHRYSLER

MODELS / MODELLE

300C
300C TOURING
CHEROKEE
CROSSFIRE
CROSSFIRE ROADSTER

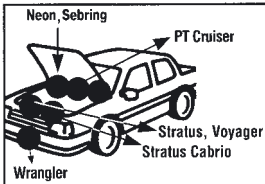
DODGE
GRAND CHEROKEE
INTREPID
JEEP
NEON

PLYMOUTH
PT CRUISER
PT CRUISER CABRIO
RAM TRUCK
RAM VAN

SEBRING
SEBRING CONVERTIBLE
STRATUS
STRATUS CABRIO
VIPER

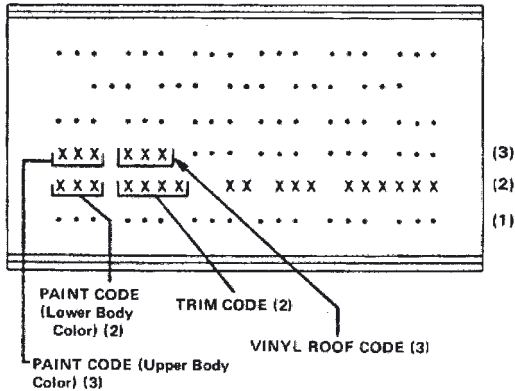
VISION
VOYAGER
WRANGLER

VIN / TYPENSCHILD

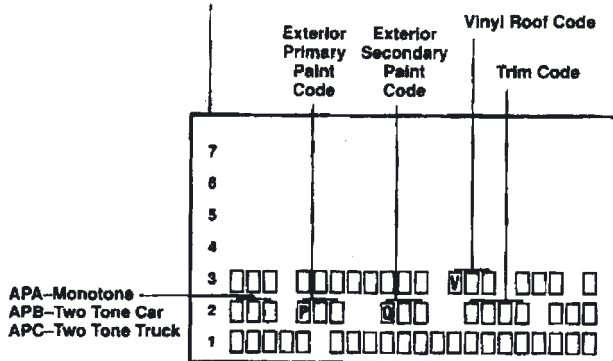


COLOR IDENTIFICATION PLATE

→ 1993

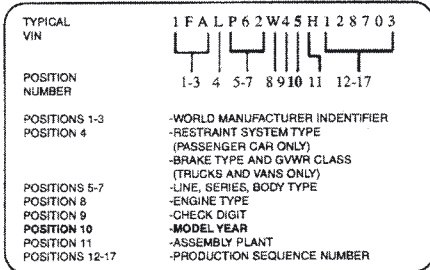


1993 →



VINformation

CHECK THIS EXAMPLE



1st Position of the VIN# (Vehicle Identification Number)

This digit breaks down the Country of Production for a vehicle sold in the U.S.A.

- 1=USA (Domestic Manufacturer)
- 2=Canada (All Manufacturers)
- 3=Mexico (All Manufacturers)
- 4=USA (Captive Imports and/or Joint Ventures)
- J= Japan (All Manufacturers)
- K=Korea (All Manufacturers)
- W=Germany (All Manufacturers)
- X=Former Soviet Union (All Manufacturers)

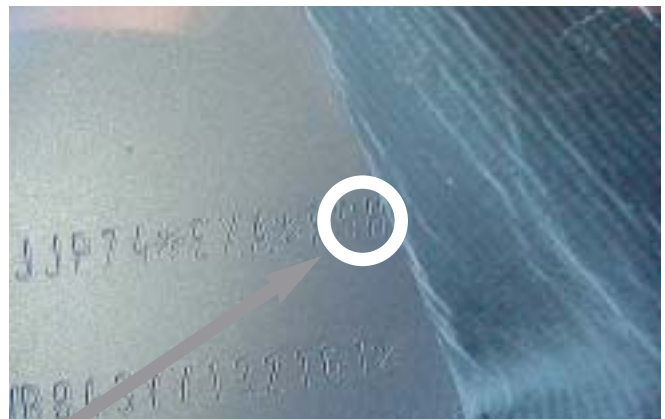
VIN Model Year ID 10th Character	Model Year
A	1980
B	1981
C	1982
D	1983
E	1984
F	1985
G	1986
H	1987
J	1988
K	1989
L	1990
M	1991
N	1992
P	1993
R	1994
S	1995
T	1996
V	1997
W	1998
X	1999
Y	2000
1	2001
2	2002
3	2003
4	2004
5	2005



= PT CRUISER
= PAINT CODE = S2



= GRAND CHEROKEE
= VIN PLATE LOCATION



= GRAND CHEROKEE
= PAINT CODE = SH